

A decorative graphic featuring a large, light blue dashed circle that frames the central text. Various solid-colored circles in shades of teal, green, yellow, orange, and pink are scattered around the page. Some circles are solid, while others are dashed outlines. A large teal ring is in the top left, a yellow ring is in the bottom right, and a green ring with a white center is in the bottom left.

Practical Tips for Becoming a Registrar

Вітаю!



Iliya Bazlyankov

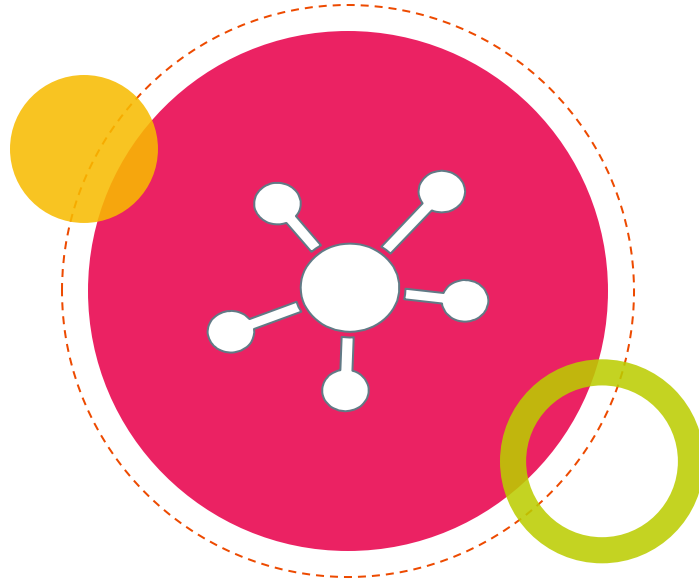
Domain Expert
eDoms

The background features several decorative elements: a large orange ring with a dashed white inner circle in the top left; a large teal ring in the bottom right; a large green circle with a white dot in the top right; a large yellow circle in the middle left; a large green circle with a dashed white border in the middle right; a large teal circle with a dashed white border in the bottom right; a large green circle with a dashed white border in the bottom left; a large yellow circle in the bottom left; a small pink circle in the middle left; a small orange circle in the top right; a small teal circle in the bottom right; and a small teal circle in the bottom left.

1

Initial Considerations

Plan and budget



Key question to answer - “Is it worth to become a registrar?”

The background features several overlapping circles in various colors: orange, yellow, pink, green, and teal. Some circles have dashed outlines, and some are solid. A large teal number '2' is centered within a large dashed circle.

2

Financial Preparation



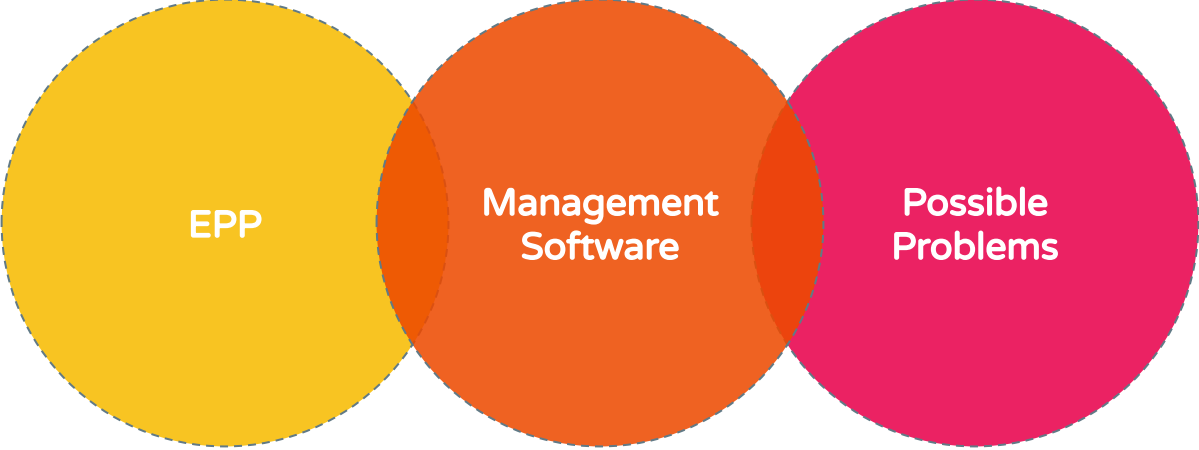
Key Questions

- ⊙ Do you need to hire new people?
- ⊙ Maybe your servers should be upgraded?
- ⊙ How many fees and deposits you will need to pay?
- ⊙ Do you have the right management software?

The background features several decorative elements: a large orange ring with a dashed red inner circle in the top left; a large teal ring in the bottom right; a large green circle with a white center in the top right; a large yellow circle in the middle left; a large green circle with a dashed white border in the middle left; a large teal circle with a dashed blue border in the bottom right; and various smaller solid circles in pink, cyan, and yellow scattered throughout.

3

Technical Setup





EPP Protocol is not the same

- ◎ According to RFC (.ua, Cocca, .ro, Registrio, Regtons Registry)
- ◎ According to RFC, but with mandatory extensions (many gTLDs, .lt)
- ◎ Close to RFC (.pl - EPP over https, .il - EPP over email)
- ◎ Based on EPP (.bg)
- ◎ Some sort of an API (Freenom)



Management Software for Registrars

- ① Write it yourself, or use an external service?
- ② Use software from providers (remotely hosted like Hexonet, InternetX, Registrio, CORE, etc.)
- ③ Make it by yourself (WHMCS or EPP-DRS and separate whois/rdap, ICANN policy, escrow)



Possible Problems

- ⦿ Needed resources - administrative, financial, technical
- ⦿ OT&E tests
- ⦿ Time for reaction
- ⦿ Bugs and other issues

The background features several overlapping circles in various colors: orange, yellow, pink, green, and teal. Some circles have dashed outlines, and some are solid. A large teal number '4' is centered within a large dashed circle.

4

Accreditation Process

The way to become a registrar

Approach Registry



Implement in your system and pay deposit



Pay fees and do tests



The background features several decorative elements: a large orange ring with a dashed red inner circle in the top left; a large teal ring in the bottom right; a large teal number '5' centered within a large dashed light blue circle; and various smaller solid and dashed circles in colors like yellow, pink, green, and lime green scattered throughout.

5

Day to day operations



Daily work of a registrar

Registry Changes

Technical Issues

Customer Support

Дякую вам!



Any questions?

Email me at iliya@edoms.com